



1070 Iyanough Rd – Rte 132 Phone: 508-280-0449

PMB 250

Hyannis, MA 02601

Email: info@jpw-solutions.com

Website:

www.jpw-solutions.com

JPW Solutions' Computers Awesome Towers at Outstanding Prices

JPW Solutions now builds two levels of computers for our clients!

The first one is a fantastic computer for most users, while the second is a high-end computer.

- The Most Popular model is perfect for most home users and businesses, offering great flexibility for customization.
- The Professional model is the right choice for anyone doing work with digital cameras/video, graphic work like Photoshop/Illustrator/Quark, game playing, or other intensive applications like AutoCAD, etc. – by multi-tasking and handling “mission critical” tasks well with Hard Disk Drive redundancy.

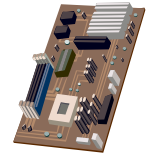
PC 101 – What makes up a Personal Computer?

- A personal computer is the same sum of basic parts, no matter what the label on the tower says. It starts with the case/tower, the motherboard, the processor, the hard drive, the CD/DVD drive(s), the video card, sound card, network card, USB, etc.
- There are hundreds if not thousands of companies out there that put together computers to compete with the likes of Dell, Apple, HP, Gateway, etc.
- All the big companies do is find the manufacturer they can get big volume discounts for each of the parts mentioned above to make up a computer - not necessarily the best or often close to the best.



What makes JPW Solutions' computers better?

- Care has been taken to design a system not only with performance and budget in mind but the future in mind as well.
- By having a JPW Solutions computer, I can hand pick (on a machine by machine basis) the best possible components at the best price to build the computer - resulting in a great, technically superior computer at a fantastic price - without all the extra hardware/software the big companies throw on that most everyone does not need.
- Another fantastic outcome of a computer design process such as JPW Solutions follows, is a greater level of interoperability and the peace of mind that comes with knowing that your current software or that old printer or camera or old expansion card will probably have no problem installing on our machines.
- In addition, each system has been designed with parts that enable future upgradeability – something that is NOT the case with most if not all of the standard manufactures.



What kind of software comes with a JPW Solutions computer, and is it ready to use?

- JPW Solutions' Computers come pre-installed with Norton Internet Security (12 months subscription with all current updates complete), Roxio CD/DVD software, Adobe Acrobat Professional (for easily creating PDFs from any application or Print dialog), Adobe Photo Software, iTunes, Microsoft Defender (for Adware/Spyware/Malware protection), etc.
- **All Windows Updates and other updates for the latest versions of software/drivers are done for you right out of the box** – Look for that with a large computer manufacturer – You will NOT find it [Usually a 2-4 hour process (\$200-\$400) with these brand name computers to get this updating done out of the box]!

Plus JPW Solutions special guide for maintaining the “Health” of your computer!

JPW Solutions' Computers: Awesome Tower - Outstanding Price!



1070 Iyanough Rd – Rte 132 Phone: 508-280-0449

PMB 250

Hyannis, MA 02601

Email: info@jpw solutions.com

Website:

www.jpw solutions.com

Computer Price List

Model A (Mainstream Plus):

- ⇒ Monitor - 19" High Performance Widescreen LCD Monitor with Built-in Speakers (VGA)
- ⇒ Case/Tower – INWIN IW-Z583T.J350BFU2AD Mid-Tower (Including 350 Watt Power Supply)
- ⇒ Motherboard – INTEL d945GCNL - 1066/800 Front Side Bus with onboard VGA (Video)
- ⇒ Processor - Intel Core 2 Duo E4500 2.4GHz 2MB Cache
- ⇒ Memory - Kingston DDR2 PC2-6400 800Mhz 2GB RAM (2 X 1GB memory chips)
- ⇒ Hard Disk Drive - Seagate 250GB SATAII 7200 RPM 16GB Cache
- ⇒ CD-DVD Drive - Lite-On SuperAllWrite DVDRW/CDRW with Lightscribe (Dual Layer Burning)
- ⇒ KOUTECH IO-FPM220 3.5" floppy drive and multi card reader Combo - 17-in-1 (for digital cameras)
- ⇒ Sabrent PCI Combo Adapter Card with 4 extra High-speed USB ports and 2 Firewire (1394) ports (for video cameras, high-speed external back-up drives)
- ⇒ Logitech Keyboard/Mouse (optical) combo

Price = \$1,199.99

Model B (Professional):

- ⇒ Monitor - 22" Black Samsung WXGA 220wmLCD Digital Monitor (DVI)
- ⇒ Case/Tower - Athenatech A6603BB.450 Black Case (Including 450 Watt Power Supply)
- ⇒ Motherboard – Intel dg33tl Motherboard with Dedicated Video Memory - 1333/1066/800 Front Side Bus and onboard DVI & VGA video, 6 High-Speed USB Ports, Firewire (1394) Port, HD Sound, Gigabit Ethernet
- ⇒ Processor - Intel Core 2 Duo 2.66 GHz E6750 4MB Cache
- ⇒ Memory - Kingston DDR2 PC2-6400 800Mhz 4GB RAM (2 X 2GB memory chips)
- ⇒ Hard Disk Drives – **Dual** Seagate 320GB SATAII 7200 RPM (2 Drives - RAID 1 (Mirror))
- ⇒ CD-DVD Drives (2) – Lite-On DVD ROM/CD Drive ("source" drive for copying a CD/DVD)
Lite-On SuperAllWrite DVDRW/CDRW with Lightscribe (Dual Layer Burning)
- ⇒ Ultra MD2 5.25" USB/eSATA hub 17-in-1 media dashboard with 4 Port USB 2.0 High Speed, 1394 Firewire (for video cameras, high-speed external back-up drives)
- ⇒ Logitech R20 Speakers 2.1 (2 speakers and subwoofer)
- ⇒ Logitech EX110 **Cordless** Duo Keyboard and optical mouse combo
- ⇒ Logitech Quickcam Messenger video chat

Price = \$1,699.99

These two models can be further customized to meet your needs – Therefore the actual prices may vary from the prices listed above, depending on the components used/needed. All computers come with Windows XP Professional, and are 100% upgradeable to Windows Vista if desired in the future (at current prices at the time). There will be a **30-day warranty** extended from system delivery date **for any JPW Solutions installed software (Operating System, Drivers, etc.) or hardware** issues that arise at no cost to you (initial computer set-up time is extra, at current labor rates – such as DSL/Cable set-up, Email set-up, printer set-up, wireless network set-up, other software installation, etc.). The hardware with this new computer comes with a **one-year warranty** (hardware replacement AND labor is covered), and **only with a fully functional UPS Battery Backup/Surge Protector in place** – Warranty will be voided without proof of this. Extended warranties for the hardware are available for 2 years for \$200 and 3 years for \$300 (not including labor costs at the current rates at the time), and **only with a fully functional UPS Battery Backup/Surge Protector in place** – Warranty will be voided without proof of this.

All warranty correspondence will be by calling (508) 280-0449 – **Local support with exemplary customer service with a JPW Solutions computer** - No 800 numbers with multiple menus to wade through, then getting someone overseas like the large manufacturers!